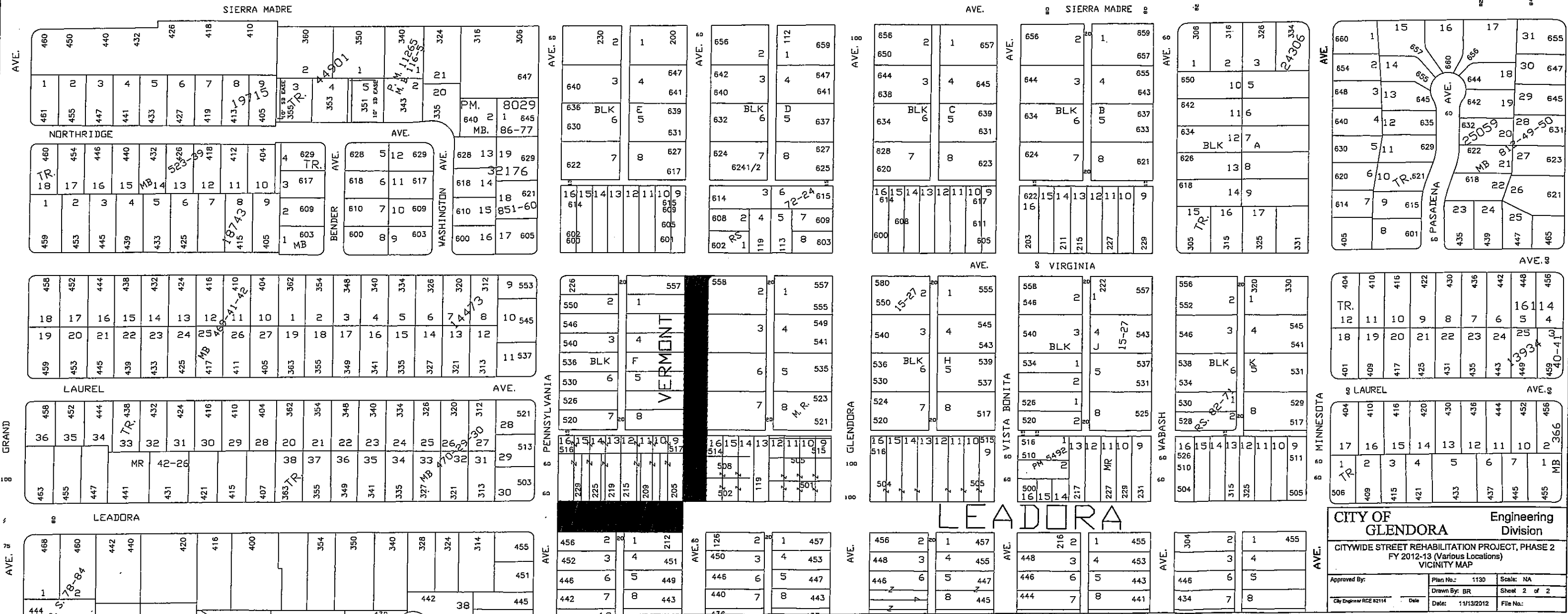
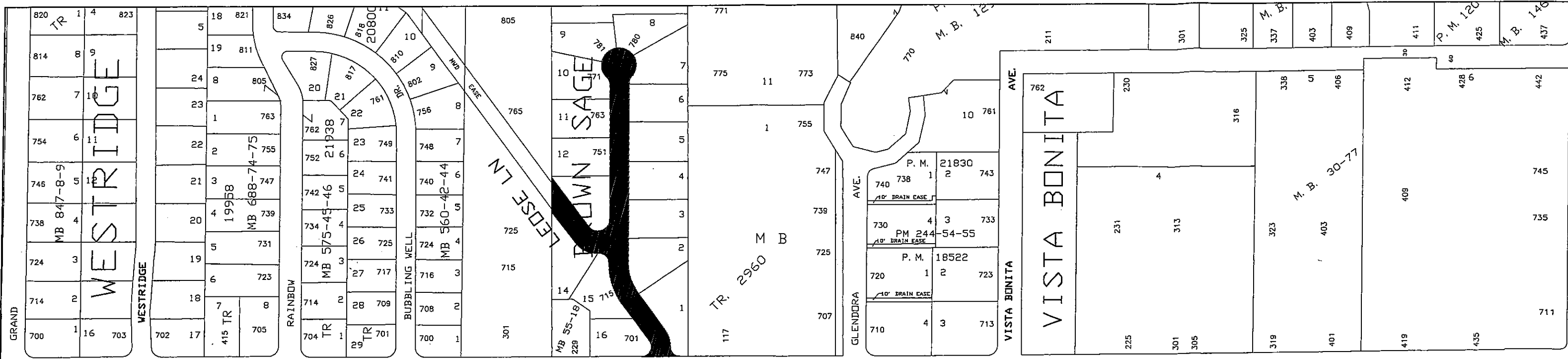


CITY OF GLENDDORA Engineering Division

CITYWIDE STREET REHABILITATION PROJECT, PHASE 2
FY 2012-13 (Various Locations)
VICINITY MAP

Approved By:	Plan No.: 1130	Scale: NA
City Engineer RCE 8214	Drawn By: BR	Sheet 1 of 2
Date:	Date: 11/13/2012	File No.:



CITY OF GLENDORA Engineering Division

CITYWIDE STREET REHABILITATION PROJECT, PHASE 2
FY 2012-13 (Various Locations)
VICINITY MAP

Approved By:	Plan No.: 1130	Scale: NA
Drawn By: BR	Date: 11/13/2012	Sheet 2 of 2
City Engineer RCE 82114	Date:	File No.:

Citywide Street Rehabilitation Project, Phase 2 - FY 2012-13 (Various Locations), Plan No. 1130

No.	Street	From	To	Item 1	Item 2	Item 3	Item 4	Item 5	Item 6	Item 7 - Traffic Striping, Markings, and RPMs			Item 8
				Traffic Control	Cold Mill Existing AC Pavement 1 1/2-inch Max (SF)	Cold Mill Existing AC Pavement 1 1/2- inch Max (Header cut) (SF)	Asphalt Concrete Surface Course (TON)	Adjust Utility MH Frame & Cover to Grade (EA)	Adjust Water Valve Cover to Grade (EA)	Double Yellow Centerline Marker (LF)	Stop Bar and Legend (EA)	Blue Retroreflective Marker (EA)	Re-Establish Survey Monument (EA)
1	Brown Sage Dr.	Sierra Madre Ave.	N'ly terminus			5,340	300	3	5	0	1	3	2
2	Leose Ln.	Brown Savge Ln.	Pennsylvania Ln.			1,850	65						
3	Carroll Ave.	Cullen Ave.	Glenwood Ave.			12,390	650	6	4		2	3	
4	Carroll Ave.	Minnesota Ave.	Cullen Ave.			4,092	210	1	3		2	2	
5	Carroll Ave.	Wabash Ave.	Minnesota Ave.		10,203		110	1	2		2	1	
6	Leadora Ave.	Vermont Ave.	Pennsylvania Ave.		12,920		130		2	340			
7	Myrtle Ave.	Cullen Ave.	Glenwood Ave.			12,282	645	5	7		2	4	1
8	Myrtle Ave.	Elwood Ave.	End			3,768	220	2	2		1	2	
9	Vermont Ave.	Leodora Ave.	Virginia Ave.		16,875		176		2		2	1	1
10	Woodland Ln.	Elwood Ave.	Loraine Ave.			8,274	421	4	4		2	3	
11	Woodland Ln.	Glenwood Ave.	End			3,096	173	1	2		1	2	1
Approximate Quantity Totals =					39,998	51,092	3,100	23	33	340	15	21	5