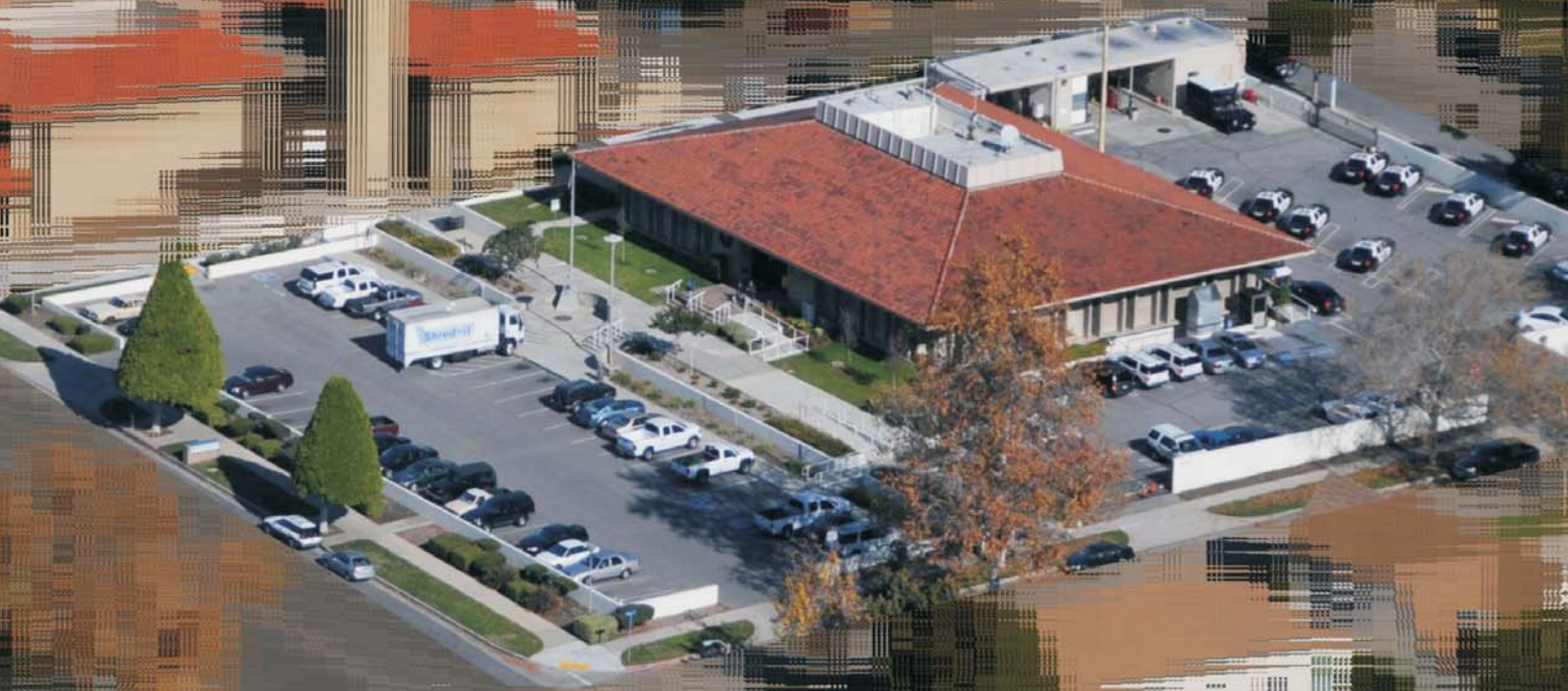


# Glendora Police Department



ANNUAL REPORT  
2008

Table of Contents





## 2008 Annual Report

Proactive Police Patrol has contributed to the reduction of crime in the city of Glendora. In 2005 Community Services Officers were hired to relieve some of the burden of report writing from Police Officers. This allowed the Officers to be more proactive in self initiated traffic stops and directed enforcement in the form of Community Oriented Policing projects (known as COPS projects) in portions of the city that are in need of attention.

The Police Department recently acquired Automatic License Plate recognition software, which allows a Patrol Officer to effortlessly run checks on numerous license plates at one time. The information received notifies the officers of stolen vehicles, if a vehicle is wanted in an Amber Alert, or if the car is owned by a felony suspect.

This past year the department also upgraded the 9-1-1 communications system. With those improvements, police dispatchers are better able to input public calls for service into the system at a quicker and more accurate rate, which gives the opportunity for an Officer to arrive on the scene sooner.

The decision was made to contract our Early Morning Parking (EMP) enforcement at a rate that is not only cost effective, but allows more uniform coverage throughout the city. When there are fewer cars on the streets, Police Officers are better able to identify vehicles which may be suspicious to the area. The EMP enforcement employees are also beneficial as extra sets of eyes and ears during the time of night when car burglaries and other crimes occur.

We are committed to our mission statement, which reads "to support and serve our community with dedication, excellence, and mutual respect."

The successes highlighted in the report are attributed to the hard work and dedication displayed by the men and women of the Glendora Police Department.

We are thankful for and recognize the support provided by the great citizens of this city.

A handwritten signature in black ink that reads "Charles R. Montoya". The signature is written in a cursive, flowing style.

Charles R. Montoya  
Chief of Police

## **GLENDORA POLICE DEPARTMENT**

Members of the Glendora Police Department understand that in order to fulfill our mission of delivering the finest police service possible, we must meet and forecast public safety needs of the community. The mission statement of the Glendora Police Department is, "To support and serve our community with dedication, excellence and mutual respect." Through our commitment to Community Oriented Policing, the members of this Department actively develop responses and solutions to the various public safety issues encountered in the City of Glendora.

The police department is structured with two Divisions, an Administrative Services Division and an Operations Division that is comprised of six Bureaus. The Administrative Services Division is managed by Chief of Police Charles R. Montoya. The Operations Division is managed by the Police Captain Robert M. Castro and is comprised of six Bureaus consisting of: Patrol Bureau, Investigations Bureau, Traffic Bureau, Emergency/Community Services Bureau, Information/Communications Bureau, and Records Bureau.

The Operations Division is managed by the Police Captain and is comprised of six Bureaus consisting of: Patrol Bureau, Investigations Bureau, Traffic Bureau, Emergency/Community Services Bureau, Information Technology/Communications Bureau, and Records Bureau. The Patrol Bureau is responsible for responding to all calls for service within the city of Glendora and providing law enforcement services. Some calls require a two-person response, such as all crimes in progress (including reports of robberies, assaults and disturbances) and traffic accidents with vehicles blocking the street. It is our goal to respond to emergencies within four minutes of receiving the call. The city of Glendora has close to 53,000 residents and officers are responsible for patrolling 151 miles of streets within 19.5 square miles. Last year officers responded to 19,393 calls for service, investigated 6,397 crimes, and issued 17,047 traffic citations.

The Administration Services Division provides administrative and operations support for the department. The division handles human resource issues, recruitment, and hiring process for the police department. The division is managed by the Chief of Police and supervised by the Support Services Supervisor. In addition to supervisory duties, the Support Services Supervisor acts as the Jail and Inmate Worker Program Manager. The Jail is audited and inspected by seven outside regulatory agencies including the State Board of Corrections, Los Angeles County Grand Jury, the Health Department, and Fire Department. The Inmate Worker Program allows sentenced prisoners to serve their incarceration time in our Jail and work performing maintenance and cleaning services to the police facility.

Animal Control is responsible for licensing dogs and cats, responding to calls for service ranging from stray dogs to wildlife straying into residential areas from the wilderness. Animal Control Officers produce educational materials relating to animal care and wildlife interaction. Community Preservation/Code Enforcement investigates violations of the City Zoning Code, Municipal Code, State Health Codes, and Uniformed Housing Code. The unit works with the City Attorney and police department to prepare legal actions when informal mitigation fails to remedy unsafe health and safety violations. This unit responds to over 2,000 requests for service annually.

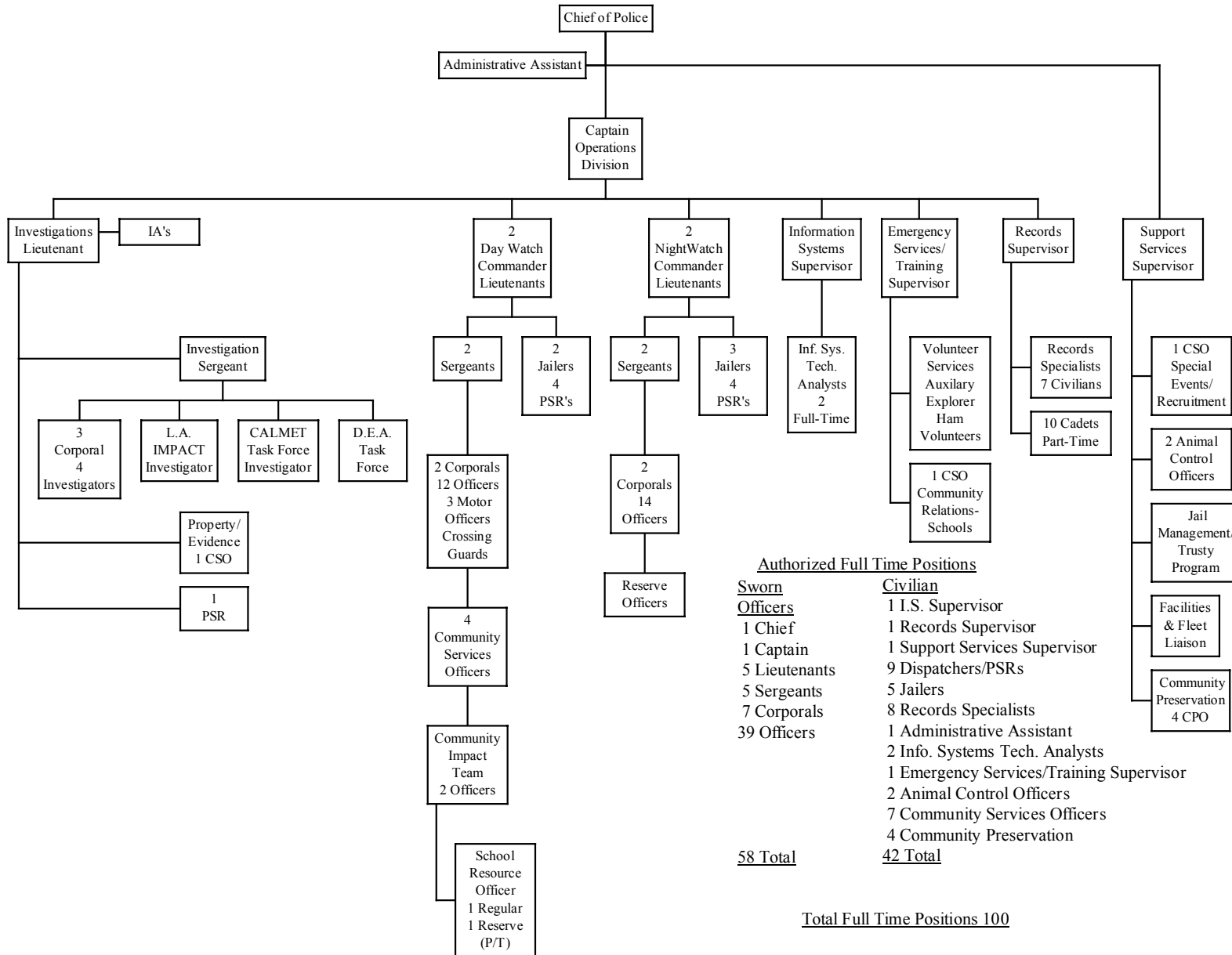
The police department employs a Community Services Officer to perform community relations programs, the Citizens' Academy, school safety education lectures, and crime prevention programs. The police department has aggressively sought grant funds to enhance public safety without requiring the need of additional city general funds. Current grants include the Office of Traffic Safety "Avoid the 40 DUI Grant," a LA County wide grant funding DUI enforcement, prevention, and educational programs. The Glendora Police Department is managing the grant for all of LA County which has funded the purchase of new equipment, vehicles, and the hiring of an additional Community Services Officer. The police department is participating in additional Office of Traffic Safety grants entitled the

“Click-it or Ticket,” “DUI Enforcement and Awareness Program” and “Empower Engage Educate: New Approaches to Increase Child Restraint Use” which fund programs for enforcement and educational awareness of traffic safety issues. In order to reduce alcohol violations, the police department works with the Alcoholic Beverage Control to conduct inspections of all alcoholic beverage sales businesses in Glendora and to conduct undercover operations to enforce underage drinking and alcohol sales. The police department has also been the recipient of Homeland Security Act Grants which has allowed the department to purchase equipment and conduct training that has enhanced the safety of our community and employees.

The police department has improved its use of technology through the use of in car computer systems that allow officers in the field immediate access to information and assist in timely responses to emergency calls. Police units have also been outfitted with in-car camera systems that will allow officers to record police actions for improved prosecutions and accountability.

As the City of Glendora continues to grow and prosper through residential and commercial developments, the police department continually analyzes and responds to the changing needs of the community.

# GLENDDORA POLICE DEPARTMENT ORGANIZATIONAL CHART



Authorized Full Time Positions

<u>Sworn Officers</u>	<u>Civilian</u>
1 Chief	1 I.S. Supervisor
1 Captain	1 Records Supervisor
5 Lieutenants	1 Support Services Supervisor
5 Sergeants	9 Dispatchers/PSRs
7 Corporals	5 Jailers
39 Officers	8 Records Specialists
	1 Administrative Assistant
	2 Info. Systems Tech. Analysts
	1 Emergency Services/Training Supervisor
	2 Animal Control Officers
	7 Community Services Officers
	4 Community Preservation
<b>58 Total</b>	<b>42 Total</b>

Total Full Time Positions 100

# Glendora Police Department

## Mission Value Statement



### ***OUR MISSION***

**To support and serve our community with dedication, excellence and mutual respect.**

### ***OUR VISION***

**To be a leader in:**

- Public Safety
- Innovation
- Service
- Problem Solving

### ***OUR CORE VALUES***

- Integrity
- Accountability
- Team Work
- Safety
- Commitment

## **EMERGENCY SERVICES 2008**

The Emergency Services/Training Bureau is part of the Operations Division and is supervised by an Emergency Manager. There are one Emergency Manager, one Community Service Officer, one Records Specialist, and over forty (40) volunteers assigned to the bureau.

The Records Specialist provides clerical support, coordinates alarm permits, and assists with other special projects as needed.

The Community Services Officer, Nita Ulloa, is in charge of the Crime Prevention and Community Relations Unit. She handles Neighborhood Watch, Crime Free Multi-housing, the Citizens Academy, Red Ribbon Week, Night Out on Crime, School programs, Community Out-Reach, and Public Presentations.

The Emergency Manager, John Schmidt, is the supervisor for the unit. The role of the Emergency Manager is to make sure city staff is trained, prepared and equipped to properly respond to and recover from emergencies and disasters. In addition, preparedness information and training is offered to the community. As the role of Training Coordinator, Mr. Schmidt is responsible for making sure all police department employees receive the proper number of state mandated training hours required each year. He also maintains the training records for the department, and makes the arrangements for training classes, including: enrollment, travel, lodging, food etc.

The over sixty (60) volunteers are broken down into the following groups:

- Twenty (20) ham radio operators who provide back up communications for emergencies and community events.
- Thirty (30) Police Auxiliary who assist various parts of the department on a daily basis.
- Twenty-four (24) Police Explorers, teenagers who are interested in a career in Law Enforcement.

### **Statistics**

Ride-Alongs: 125

Community Presentations: 60 Participants: 3000

Citizens Academy: 2 Participants: 60

Tours: 30 Participants: 325

Vacation House Checks: Over 800

Open House: 1 Participants: 500

National Night Out participants: 350

## **RESERVE OFFICERS - 2008**

Casey O'Gorman - 29 years  
Amin Khademi - 11 years  
Greg Santelices - 7 years  
Sam Anabi - 4 years  
Timothy Kral - 2 years  
Rick Young - 2 years  
Keith Didier - 2 years  
Robbie Haney – 1 year

The Glendora Reserve Police Force is a special unit of part-time police officers assigned to the Field Operations Bureau. The unit is comprised of professionals from different walks of life who have chosen part-time law enforcement as their way of contributing community service to the residents of Glendora. The members are sworn police officers who are distinguished from full-time officers only in the number of hours they work. The selection, training, and on-the-job performance requirements for reserve officers are similar to those for full-time officers. The mandates from the Commission on Peace Officer Standards and Training help ensure that reserve officers are competent to perform at the same level as regular officers.

The Reserve Force is an economical and valuable resource, which greatly enhances the department's flexibility and general ability to fulfill its mission. In 2008, Reserve Officers Khademi, O'Gorman, Kral, Young, Haney and Didier were assigned to the patrol division. They performed patrol responsibilities, supplementing regular patrol shifts, and provided summer vacation relief for full-time officers. In addition, Officers Khademi and O'Gorman often worked extra shifts paired as a warrant arrest team, which resulted in numerous arrests of wanted suspects. Officer Anabi was assigned to the Administration Bureau where he performed a variety of administrative tasks. Officers Khademi, O'Gorman, Kral, Young, Didier, Haney and Anabi worked approximately 3070 hours during 2008. Reserve Officer Santelices retired as a full-time officer in 2001 and became a Reserve shortly thereafter. He is currently assigned as the School Resource Officer at Sierra High School and his work hours (about 1000) are not included in this total.

## **RESERVE FORCE ACTIVITIES**

TOTAL SERVICE HOURS:	3070
TOTAL NUMBER OF RESERVE OFFICERS:	8

Sgt. Matt Egan  
Reserve Officer Coordinator



## AUXILIARY VOLUNTEERS

The Department is very proud of the contributions of the Police Auxiliary. The role of the Auxiliary continues to change as we find new ways that they can make contributions to helping maintain the special relationship that exists between the community and the Police Department.

The Glendora Police Auxiliary is a group of volunteers who spend many hours assisting the Police Department in tasks that would otherwise require the deployment of full-time police officers or paid employees. The Auxiliary Officers continue to serve at the major community events, which include the Glendora Christmas Parade, Village Stroll, Foothill Presbyterian Hospital/Spring Run, as well as many health fairs and school fingerprint details. They also coordinate the Santa Claus visits each Christmas, visiting the homes of local children. The Auxiliary Officers also provide additional manpower at emergency locations such as the recent fires, direct traffic at traffic accidents, assist Police Officers at football games, provide school and business patrol, deploy the radar trailer, and keep records of street lights in need of replacement. Inside the police station, the volunteers assist at the front counter, handle animal control licensing, scan reports onto optical disc, conduct Livescan fingerprinting for sports leaders and business professionals, and other clerical duties.

The Glendora Police Department currently has 30 Auxiliary Officers who contributed over 8,100 hours of service during 2008 saving the City an estimated \$170,000.00. Captain Richard Mila de la Roca currently heads up the Auxiliary volunteers. John Schmidt is the Auxiliary Coordinator, and he is working to expand the services provided by these valuable contributors.



**GLENDORA POLICE DEPARTMENT  
EXPLORER POST #402**



The Glendora Police Department Explorer Post #402 provides an opportunity for high school aged boys and girls to experience firsthand what it takes to get started in a challenging law enforcement career.

Explorer post members receive hands on training in various aspects of police work. The training is presented at each regularly scheduled meeting by police officers and other department personnel. Some areas of training include: *city geography, radio codes, traffic stops, DUI, handcuffing techniques, building searches, traffic control and a K-9 demonstration.*

Explorer post members participate in ride-a-longs with Glendora police officers. This enables the Explorer to observe a police officer as they perform their duties and gain valuable insight into handling a variety of situations.

The Explorer post members attend a training academy and can earn school credit for their participation through the Regional Occupational Program (ROP).

Glendora Police Explorer Post #402 is continuously looking for young people from 14 to 18 years of age who have the desire and dedication to learn what it takes to become part of a law enforcement team!

The Post has 30 members and the Explorer Advisors are Corporal Joe Ortiz, Officers Gwen Lacombe, Pete Gold, Bill Lee, Nancy Miranda, Shelly Schaiterer, Danny Antillon, Zachary Houser, Joshua Price, Kathryn Skeie, Jacob Swann, David Wanstrath, Russell Ziino, CSO Valerie Peterson, Code Enforcement Officer Rafael Perez and Dispatcher Patricia Sorensen.



**Animal Control Officer  
Lorena Arreola**

## ANIMAL CONTROL PROGRAM

Animal Control is a division of the Glendora Police Department. They have been providing animal related services to the community for twenty-five years. The two full-time animal control officers respond to calls of sick, injured and stray animals. They frequently handle calls relating to vicious animals, rattlesnakes, bears, coyotes, and mountain lions. The officers are responsible for yearly state and locally mandated dog licensing. Revenue generated through licensing and other related fees generates 60% of Animal Control's budget. The department contracts with Inland Valley Humane Society in Pomona for shelter services.



**Animal Control Officer  
Jolean Miller**

<u>CLASSIFICATION</u>	<u>2002</u>	<u>2003</u>	<u>2004</u>	<u>2005</u>	<u>2006</u>	<u>2007</u>	<u>2008</u>
Dog Licenses Sold	5,115	5,431	5,394	5,621	5,911	6,068	5,239
Non-spayed/neutered	1,293	1,419	1,485	1,187	1,139	1,118	1,000
Spayed/Neutered	3,822	3,999	3,909	4,434	4,772	4,956	4,239
Injured Animals	46	43	17	45	34	47	28
Animals Impounded	1,202	1,205	1,013	985	737	788	846
Citations Issued	12	17	13	7	7	11	8
Warnings Issued	397	325	355	842	322	368	360
Dog Bite Cases	10	10	24	17	15	13	15
Dead Carcasses	536	550	714	589	479	584	876
Animals Recovered (By Owner)	387	350	356	426	296	274	294
Field Services	3,044	2,943	2,992	2,721	2,528	3,317	3,098

## GLENDORA POLICE DEPARTMENT 2008 TRAINING

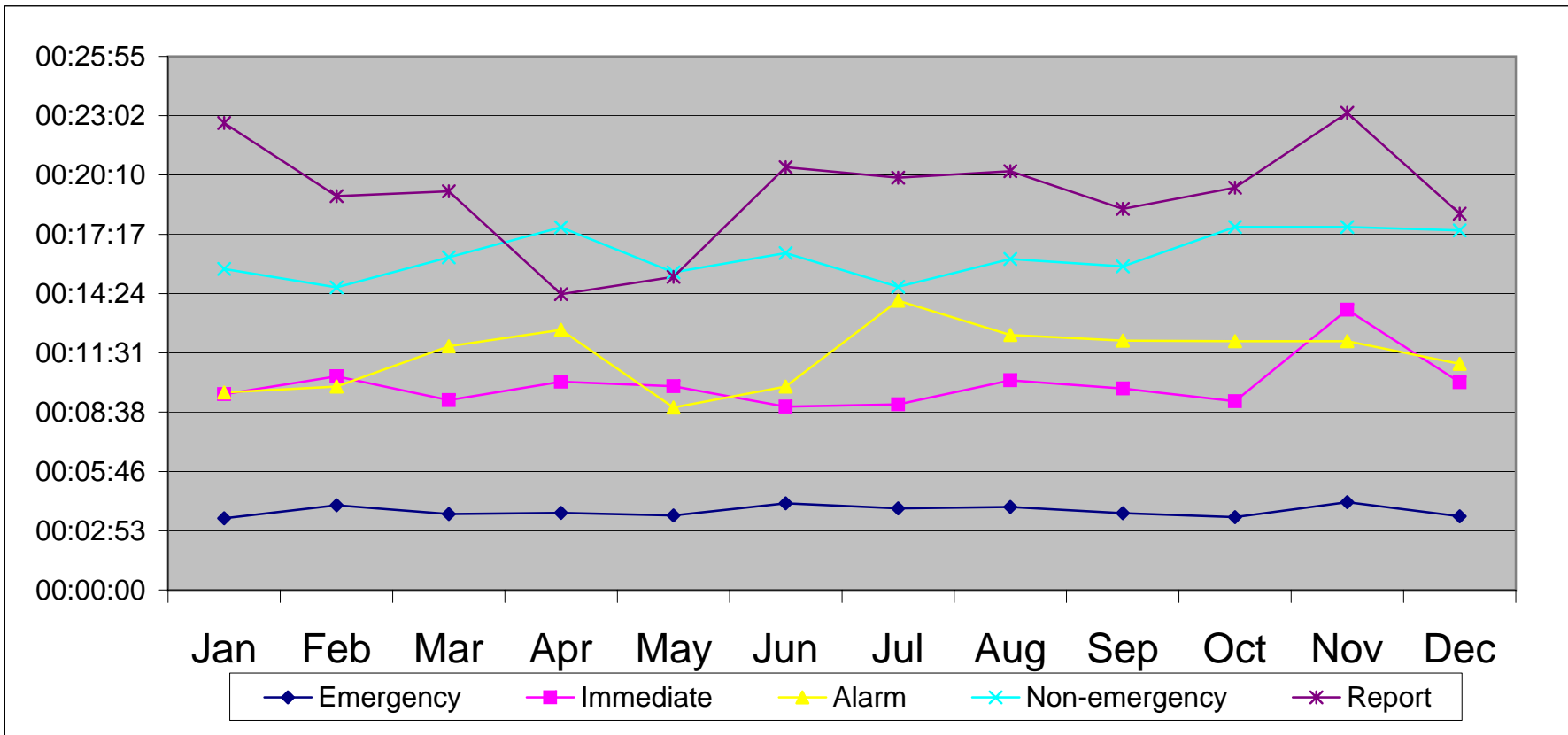
Given the ever increasing responsibilities for crime control and mandated reporting requirements, as well as the continuing responsibilities for a myriad of skills and knowledge level, our personnel require constant update training. The following reflects the commitment of the department to maintain our skills and competencies.

<u>DIVISION</u>	<u>HOURS OF TRAINING</u>
Patrol	3,314
Investigations/Narcotics	720
Reserve Officer Unit	162
Administration	240
Traffic Unit	46
Animal Control	48
Records	134
PSR/Jailer	200
Community Service Officers	240
Cadets	12
Code Enforcement	25
<b>TOTAL</b>	<b>5,141</b>

## Response Times to Calls for Service 2008

	Average	Definition
<b>Emergency</b>	0:03:50	Officer responding with red lights and siren.
<b>Immediate Response</b>	0:09:59	Officer needed as fast as possible, obey all traffic laws.
<b>Alarm</b>	0:11:22	Officer needed to respond to an alarm activation.
<b>Non-Emergency</b>	0:16:16	Beat Officer needed when available.
<b>Report</b>	0:19:16	Beat Officer needed to take a report when available.
<b>Combined Average</b>	0:13:44	

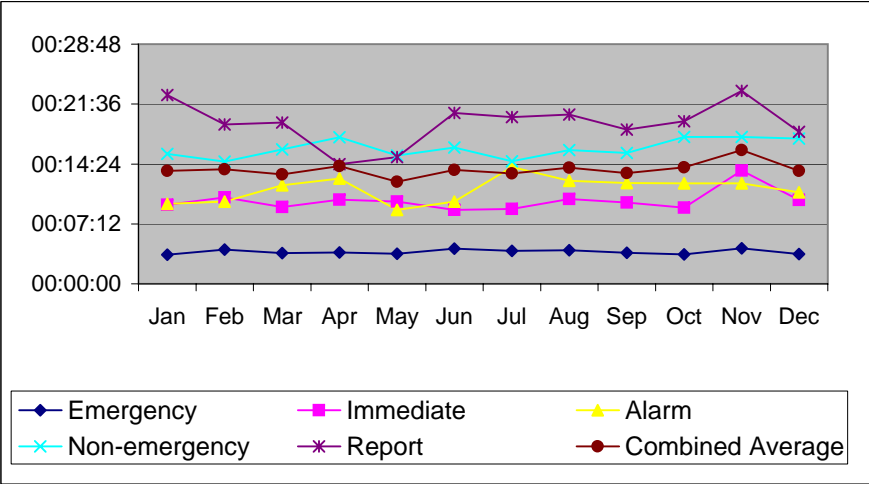
\* Response time is measured from the time the Dispatcher receives the call for service from the public, until the time the responding Officer arrives at the location of the call.





## Response Times to Calls for Service 2008

	Jan	Feb	Mar	Apr	May	Jun	Jul	Aug	Sep	Oct	Nov	Dec	AVERAGE
<b>Emergency</b>	00:03:29	00:04:07	00:03:41	00:03:45	00:03:37	00:04:13	00:03:58	00:04:02	00:03:44	00:03:32	00:04:16	00:03:35	0:03:50
<b>Immediate</b>	00:09:31	00:10:23	00:09:13	00:10:07	00:09:54	00:08:54	00:09:01	00:10:11	00:09:47	00:09:10	00:13:37	00:10:05	0:09:59
<b>Alarm</b>	00:09:36	00:09:53	00:11:50	00:12:38	00:08:52	00:09:53	00:14:03	00:12:23	00:12:07	00:12:05	00:12:05	00:10:59	0:11:22
<b>Non-emergency</b>	00:15:36	00:14:42	00:16:10	00:17:37	00:15:26	00:16:22	00:14:44	00:16:05	00:15:43	00:17:38	00:17:38	00:17:28	0:16:16
<b>Report</b>	00:22:41	00:19:08	00:19:22	00:14:22	00:15:13	00:20:32	00:20:02	00:20:21	00:18:31	00:19:33	00:23:11	00:18:17	0:19:16
<b>Combined Average</b>	00:13:34	00:13:47	00:13:10	00:14:08	00:12:15	00:13:41	00:13:16	00:13:58	00:13:18	00:14:00	00:16:04	00:13:34	0:13:44



- Emergency: Officer responding with red lights and siren.
- Immediate: Officer needed as fast as possible, obey all traffic laws.
- Alarm: Officer needed to respond to an alarm activation.
- Non-Emergency: Beat officer needed when available.
- Report: Beat officer needed to take a report when available.

## CRIMES REPORTED TO POLICE

Crimes reported to police reflect only a portion of all actual crimes in any jurisdiction and are uniformly reported by all policing agencies across the state and the nation.

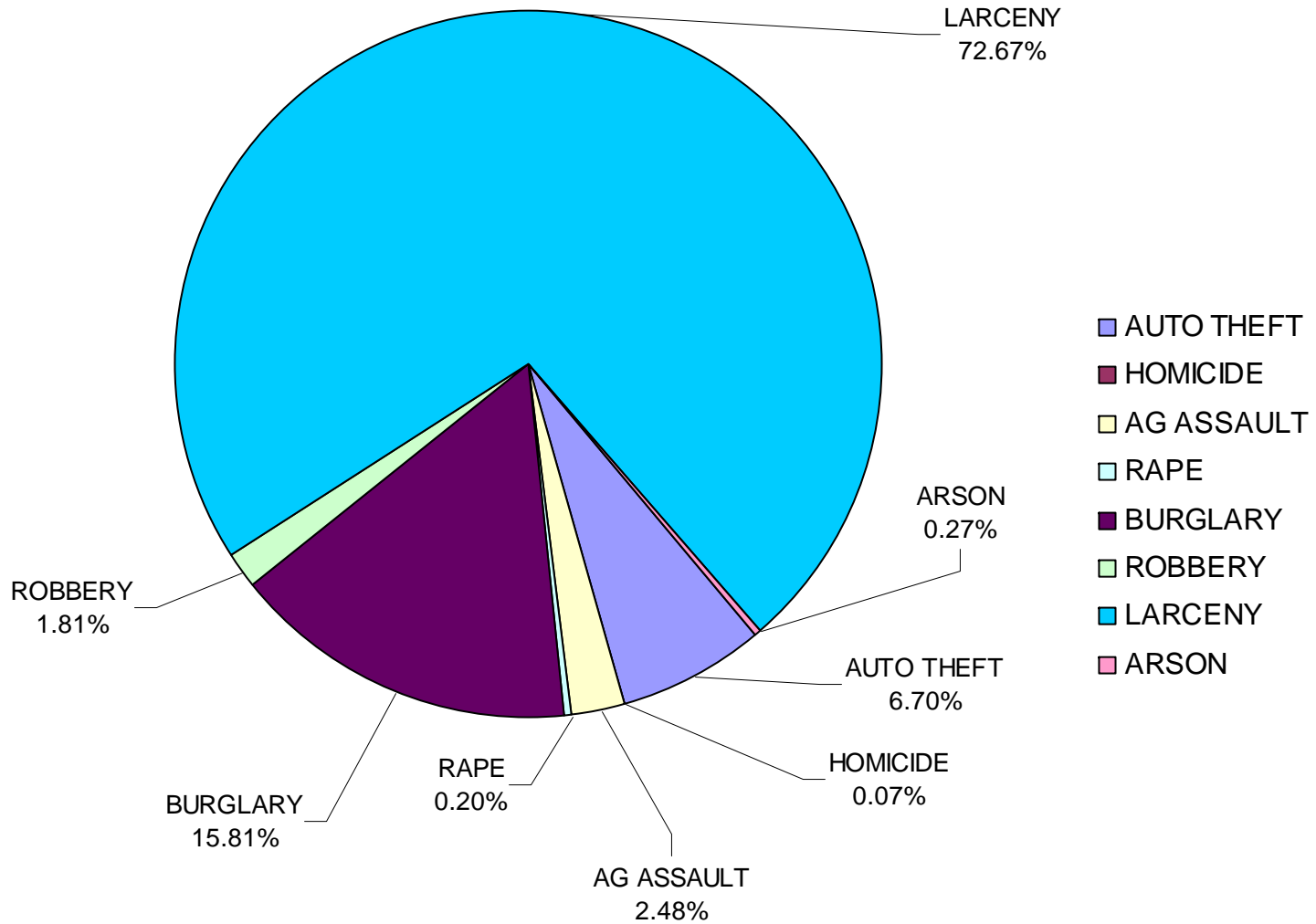
<u>PART I</u>	<u>2004</u>	<u>2005</u>	<u>2006</u>	<u>2007</u>	<u>2008</u>
Crimes Against Persons	73	56	73	83	68
Crimes Against Property	1,313	1,273	1,457	1,510	1,425

## MAJOR OFFENSES AND CASE CLEARANCES

<u>CLASSIFICATION</u>	<u>NUMBER OF OFFENSES</u>					<u>CASES CLEARED</u>				
	<u>2004</u>	<u>2005</u>	<u>2006</u>	<u>2007</u>	<u>2008</u>	<u>2004</u>	<u>2005</u>	<u>2006</u>	<u>2007</u>	<u>2008</u>
CRIMINAL HOMICIDE	0	0	3	1	1	0	0	3	2	1
NEGLIGENT MANSLAUGHTER	0	0	0	0	0	0	0	0	0	0
FORCIBLE RAPE	5	5	2	9	3	13	6	2	8	3
ROBBERY	42	24	22	32	27	25	5	4	12	19
ASSAULT-FIREARM	5	1	7	3	3	2	1	6	4	4
ASSAULT-KNIFE	6	12	6	10	11	3	13	5	7	11
ASSAULT-OTHER WEAPON	9	9	20	14	11	9	6	17	14	7
ASSAULT-HANDS/FEET	6	5	13	14	12	6	3	12	11	13
ASSAULT-SIMPLE	344	349	374	350	320	369	332	350	331	285
BURGLARY	228	183	205	218	236	60	36	38	39	64
LARCENY	908	954	1,110	1,173	1,085	297	242	298	344	304
ARSON	8	8	19	16	4	1	6	8	6	1
AUTO THEFT	169	128	123	103	100	72	60	26	27	23
TOTALS:	1,730	1,678	1,678	1,943	1,813	857	710	769	805	734

# Major Crime Index 2008

Total: 1493



**2008 PROPERTY LOSS**

<b><u>ROBBERY</u></b>	<b><u>No.</u></b>	<b><u>Value</u></b>
Highway, Street & Alley	4	\$213
Commercial House	8	4,099
Gas or Service Station	0	0
Convenience Stores	0	0
Residential	4	1,782
Bank	1	1,392
Miscellaneous	10	11,564
<b>TOTALS:</b>	<b><u>27</u></b>	<b><u>\$19,050</u></b>

<b><u>LARCENY - THEFT</u></b>	<b><u>No.</u></b>	<b><u>Value</u></b>
Pocket Picking	4	\$1,688
Purse Snatching	4	2,701
Shoplifting	164	60,815
From Motor Vehicles	336	386,191
Auto Accessories	74	177,079
Bicycles	45	16,683
Buildings	202	174,908
Coin-Op Machines	6	991
Miscellaneous	250	429,834
<b>TOTALS:</b>	<b><u>1,085</u></b>	<b><u>\$1,250,890</u></b>

<b><u>BURGLARY</u></b>	<b><u>No.</u></b>	<b><u>Value</u></b>
Residential - Night	35	\$50,286
Residential - Day	84	320,685
Residential - Unknown	56	220,117
Commercial - Night	39	95,367
Commercial - Day	7	817
Commercial - Unknown	15	13,744
<b>TOTALS:</b>	<b><u>236</u></b>	<b><u>\$701,016</u></b>

<b><u>TOTAL LOSS AND RECOVERY</u></b>	
Property Loss By Theft	<b><u>\$3,278,605</u></b>
Property Recovered	<b><u>\$621,396</u></b>
Net Value Loss	<b><u>\$2,657,209</u></b>

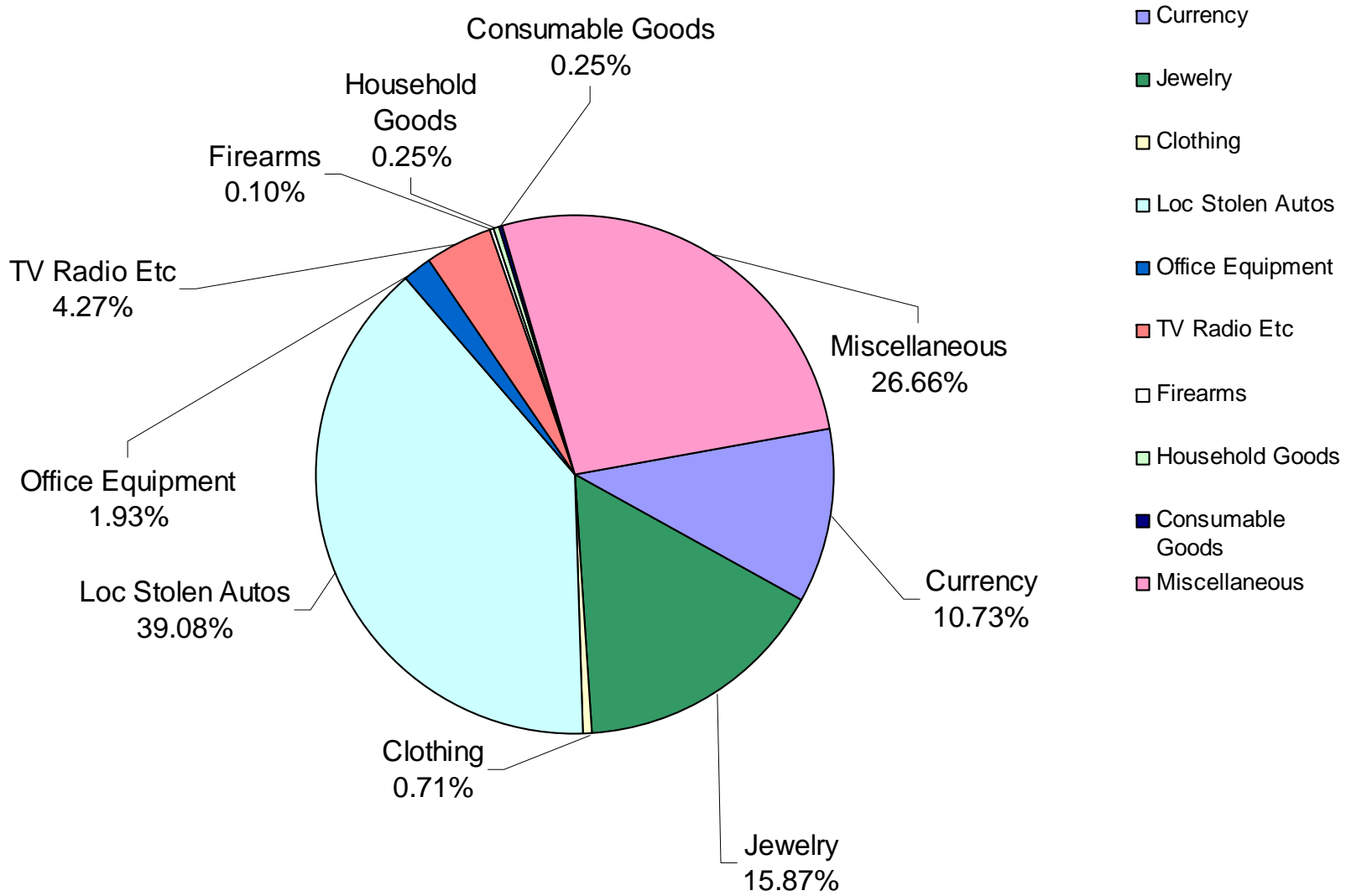
<b><u>MOTOR VEHICLE THEFT</u></b>		
<b>TOTAL:</b>	<b><u>100</u></b>	<b><u>\$1,307,649</u></b>

<b><u>MOTOR VEHICLES RECOVERED</u></b>	<b><u>2007</u></b>	<b><u>2008</u></b>
Stolen from Glendora, Recovered in Glendora	26	16
Stolen from Glendora, Recovered elsewhere	45	36
Stolen elsewhere, Recovered in Glendora	51	44

**\*\*GRAND TOTAL\*\***      **1,536**      **\$2,916,649**

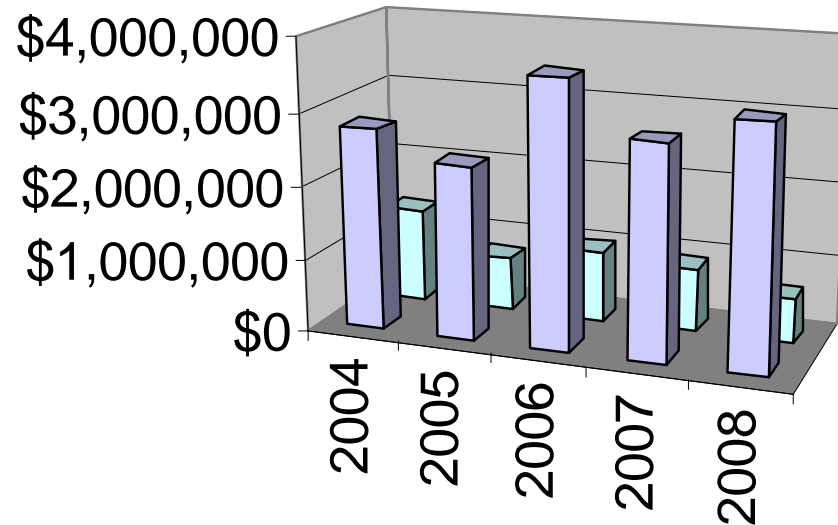
# Property Stolen by Category

## Total for 2008: \$3,278,605





## Property Stolen and Recovered 2004-2008



	2004	2005	2006	2007	2008
■ STOLEN	\$2,772,782	\$2,374,934	\$3,651,720	\$2,916,649	\$3,278,605
■ RECOVERED	\$1,297,889	\$743,572	\$970,574	\$883,242	\$621,396

### 2008 ARREST BY GENDER/AGE GROUPS

JUVENILES	MALE			FEMALE			TOTAL			
	AGE	2006	2007	2008	2006	2007	2008	2006	2007	2008
	0 - 9	1	3	0	0	0	0	1	3	0
	10 - 12	41	12	11	2	6	0	43	18	11
	13 - 14	49	48	50	23	22	12	72	70	62
	15	46	43	40	13	18	15	59	61	55
	16	56	56	53	9	15	18	65	71	71
	17	69	80	64	10	18	30	79	98	94
	<b>SUB-TOTALS:</b>	<b>262</b>	<b>242</b>	<b>218</b>	<b>57</b>	<b>79</b>	<b>75</b>	<b>319</b>	<b>321</b>	<b>293</b>
	<b>ADULTS</b>									
	18	71	96	122	30	35	20	101	131	142
	19	94	101	114	22	30	23	116	131	137
	20	79	98	97	18	17	20	97	115	117
	21	89	79	74	18	20	25	107	99	99
	22	75	64	53	18	13	15	93	77	68
	23	70	80	47	16	21	13	86	101	60
	24	59	67	61	33	11	12	92	78	73
	25 - 29	277	281	230	81	85	73	358	366	303
	30 - 39	380	360	334	131	100	98	511	460	432
	40 - 49	257	236	301	88	81	84	345	317	385
	50 +	109	96	122	24	22	24	133	118	146
	<b>SUB-TOTALS:</b>	<b>1,560</b>	<b>1,558</b>	<b>1,555</b>	<b>479</b>	<b>435</b>	<b>407</b>	<b>2,039</b>	<b>1,993</b>	<b>1,962</b>
	<b>TOTALS</b>	<b>1,822</b>	<b>1,800</b>	<b>1,773</b>	<b>536</b>	<b>514</b>	<b>482</b>	<b>2,358</b>	<b>2,314</b>	<b>2,255</b>

**2008  
TRAFFIC ACCIDENT SUMMARY**

<b>Hour of the Day:</b>	0000	0400	0800	1200	1600	2000	
	0400	0800	1200	1600	2000	2400	<b>TOTAL</b>
<b>Day of the Week:</b>							
Sunday	12	4	6	18	13	7	<b>60</b>
Monday	7	4	18	29	33	7	<b>98</b>
Tuesday	14	16	26	42	29	10	<b>137</b>
Wednesday	9	7	22	33	28	6	<b>105</b>
Thursday	6	7	27	28	24	15	<b>107</b>
Friday	8	6	13	31	24	17	<b>99</b>
Saturday	16	5	13	28	23	4	<b>89</b>
<b>• TOTAL:</b>	<b>72</b>	<b>49</b>	<b>125</b>	<b>210</b>	<b>175</b>	<b>66</b>	<b>695</b>

<u>Traffic Accident Five Year Comparison</u>	<u>2004</u>	<u>2005</u>	<u>2006</u>	<u>2007</u>	<u>2008</u>
Injury Accident	199	174	157	162	180
Number Injured	275	245	208	213	229
Fatal Accidents	2	1	0	4	1
Number Killed	2	1	0	4	1
Property Damaged Accidents	512	555	539	584	514
<b>• Total Traffic Accidents</b>	<b>713</b>	<b>730</b>	<b>696</b>	<b>750</b>	<b>695</b>

<u>Vehicular Citations and Verbal Warnings Issued</u>					
Hazardous Citations	4,214	5,317	5,588	5,976	6,029
Non Hazardous Citations	2,426	1,439	1,111	702	1,069
Parking Citations	5,083	5,051	5,696	5,868	9,949
Verbal Warnings *	8,890	9,254	9,247	10,195	10,650
<b>• Total Citations Issued</b>	<b>11,723</b>	<b>11,807</b>	<b>12,395</b>	<b>12,546</b>	<b>17,047</b>

\*Not included in total



## **CITY OF GLENDORA 2008\***

- **FIGURES REFLECT BUDGET FOR FISCAL YEAR 2008/2009**

Population Estimate as of January 1, 2008	52,199
Area in Square Miles	19.5
Total Length of Paved Streets in Miles	151.91
Glendora Total City General Fund Budget	\$24,446,732
Police Department Budget**	\$13,302,257
Police Percentage of Total Budget	54.41%
Police Operation Per Capita	\$254.84

\*\*The police department budget includes costs incurred for animal control, code enforcement, radio maintenance, building maintenance, crossing guards, capital outlay items and telephone service for all city departments. This figure also includes grant, restricted and General Fund sources.

## **TABLE OF CONTENTS**

### **2008 GLENDORA POLICE DEPARTMENT ANNUAL REPORT**

- 1. Cover**
- 2. Chief's Introduction**
- 3. Glendora Police Department**
- 4. Organizational Chart**
- 5. Mission Value Statement**
- 6. Police Officer/Public Safety Employee of the Year**
- 7. Emergency Services**
- 8. Reserve Officers**
- 9. Auxiliary Volunteers**
- 10. Explorers**
- 11. Animal Control**
- 12. Department Training**
- 13. Monthly Response Times Chart**
- 14. Monthly Response Times Data**
- 15. Crimes Reported to Police**
- 16. Major Crime Index Chart**
- 17. Property Loss**
- 18. Property Stolen by Category Chart**
- 19. Property Stolen and Recovered Chart**
- 20. Arrest by Gender/Age Groups**
- 21. Traffic Accident Summary**
- 22. City of Glendora Budget**
- 23. Table of Contents**