

Dear Neighbor:

The Los Angeles County Department of Public Works operates and maintains the Englewild Debris Basin above the intersection of Englewild Drive and Palm Drive in the City of Glendora. During the recent intensive storm, a significant amount of sediment and debris has eroded into the basin from the hillsides burned by the Colby Fire. To restore the basin's storage capacity and ability to protect downstream residents and property, the Department needs to remove the material.

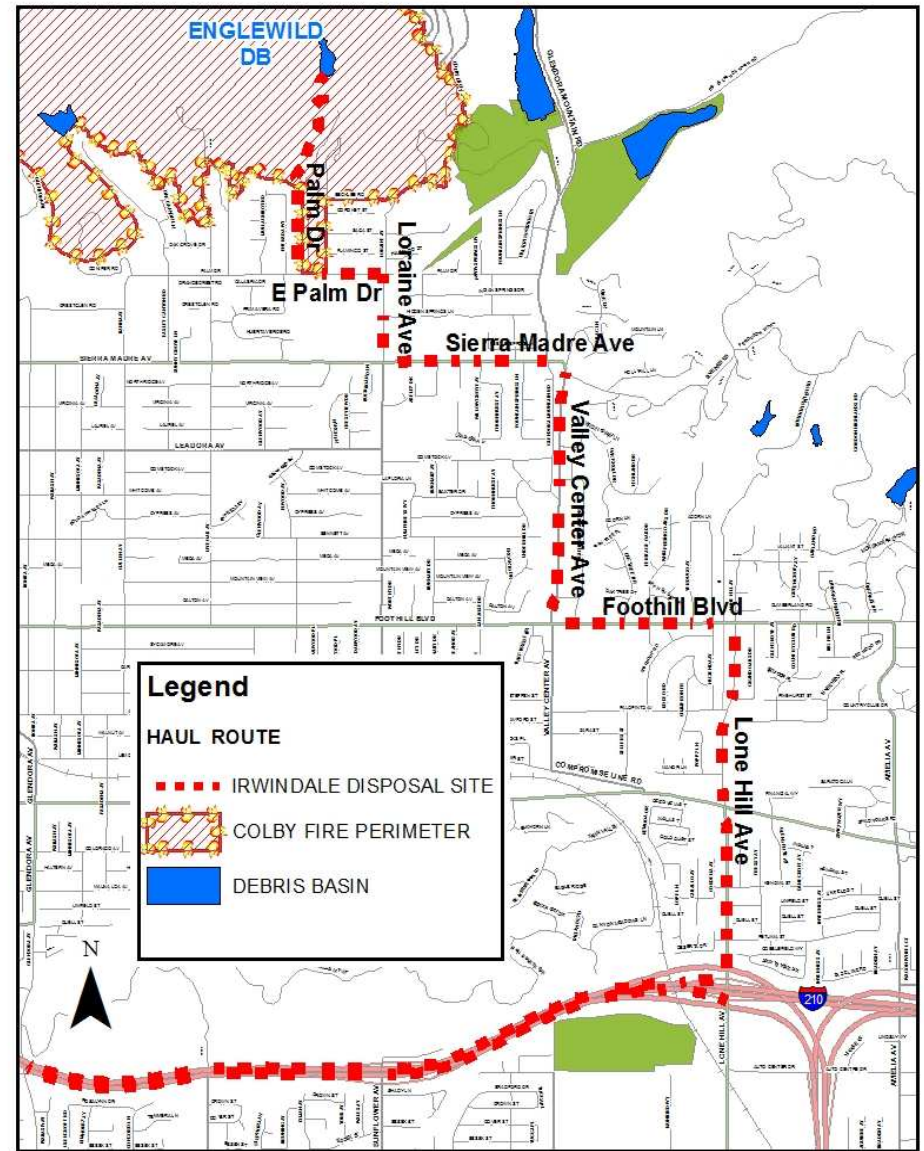
The sediment hauling operation will, tentatively, begin on Tuesday, December 9th, and last for approximately four weeks*, between 7 a.m. and 5 p.m., Monday to Friday. The materials will be transported as shown on the attached haul route map. The disposal site will be in the City of Irwindale near Arrow Hwy and Vincent Ave. The complete haul routes to the disposal sites can be viewed at <http://goo.gl/maps/oD5wU>. The hauling operations have been coordinated with the City of Glendora.

Route to Irwindale disposal site: Palm Dr, to E Palm Dr, to Loraine Ave, to Sierra Madre Ave, to Valley Center Ave, to Foothill Blvd, to Lone Hill Ave, to 210 Fwy, to Irwindale Ave, to Gladstone Street, to Vincent Ave.

Thank you for your understanding and support for this important project.

For questions or concerns, please call:
Longden Yard Facilities Engineering Unit
Phone Number: (626) 445-7630
Fax: (626) 446-2624
Office Working Hours: Monday-Friday 7:00 a.m. to 5:00 p.m.
After Hours: (626) 458-HELP
Email: ezargari@dpw.lacounty.gov

*subject to change due to weather and other conditions.



HAUL ROUTE FROM ENGLEWILD DEBRIS BASIN

LOS ANGELES COUNTY DEPARTMENT OF PUBLIC WORKS
FLOOD MAINTENANCE DIVISION



ENGLEWILD DEBRIS BASIN
SEDIMENT REMOVAL AND DISPOSAL
STARTING
TUESDAY, DECEMBER 9, 2014